

THE COASTER



FREE STANDING MULTI-FUEL STOVE

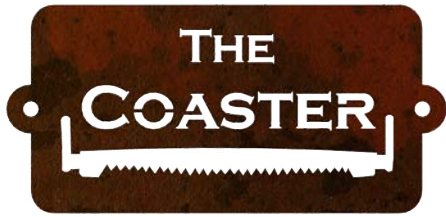
Designed for this country's most challenging environments, **The Coaster** provides the reliability you need, when keeping warm can be a matter of life or death. This rugged multi-fuel fire combines value, performance, efficiency and flexibility – with a cook top and a wet back option.

- Burns wood and coal
- Powerful 22kW output
- Generous fire box
- Large ash pan
- Dual air controls
- Optional wet back
- Exempt from NES clean air requirements
- 15 year warranty
- Cook top – great for power outages

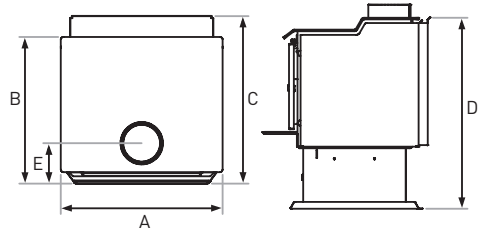


Available only from selected retailers





FREE STANDING MULTI-FUEL STOVE



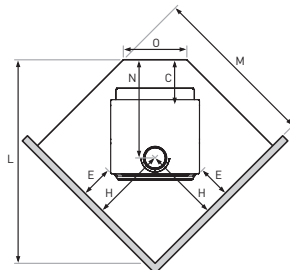
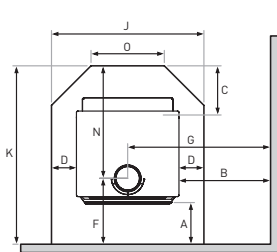
Dimensions (mm)

		THE COASTER
A	Overall Stove Width	615
B	Stove Depth - Door to Rear	554
C	Overall Stove Depth - Ledge to Rear	633
D	Overall Stove Height	726
E	Flue Centre to Back of Unit	149

Clearances (mm)

	A	B	C	D	E	F	G	H	J	K	L	M	N	O
THE COASTER	250	550	300	150	225	391	858	516	915	1071	1410	1152	680	440

NOTE: All specifications are subject to change without notification. Please refer to the current installation instructions when installing your fire.



New Zealand's leading supplier
of advice and fires.